

PEAK TO PEAK CHARTER SCHOOLS, INC.

501(C)(3) NON-PROFIT PUBLIC SCHOOL

BOARD OF DIRECTORS

**2022-23 PEAK TO PEAK
BOARD OF DIRECTORS**

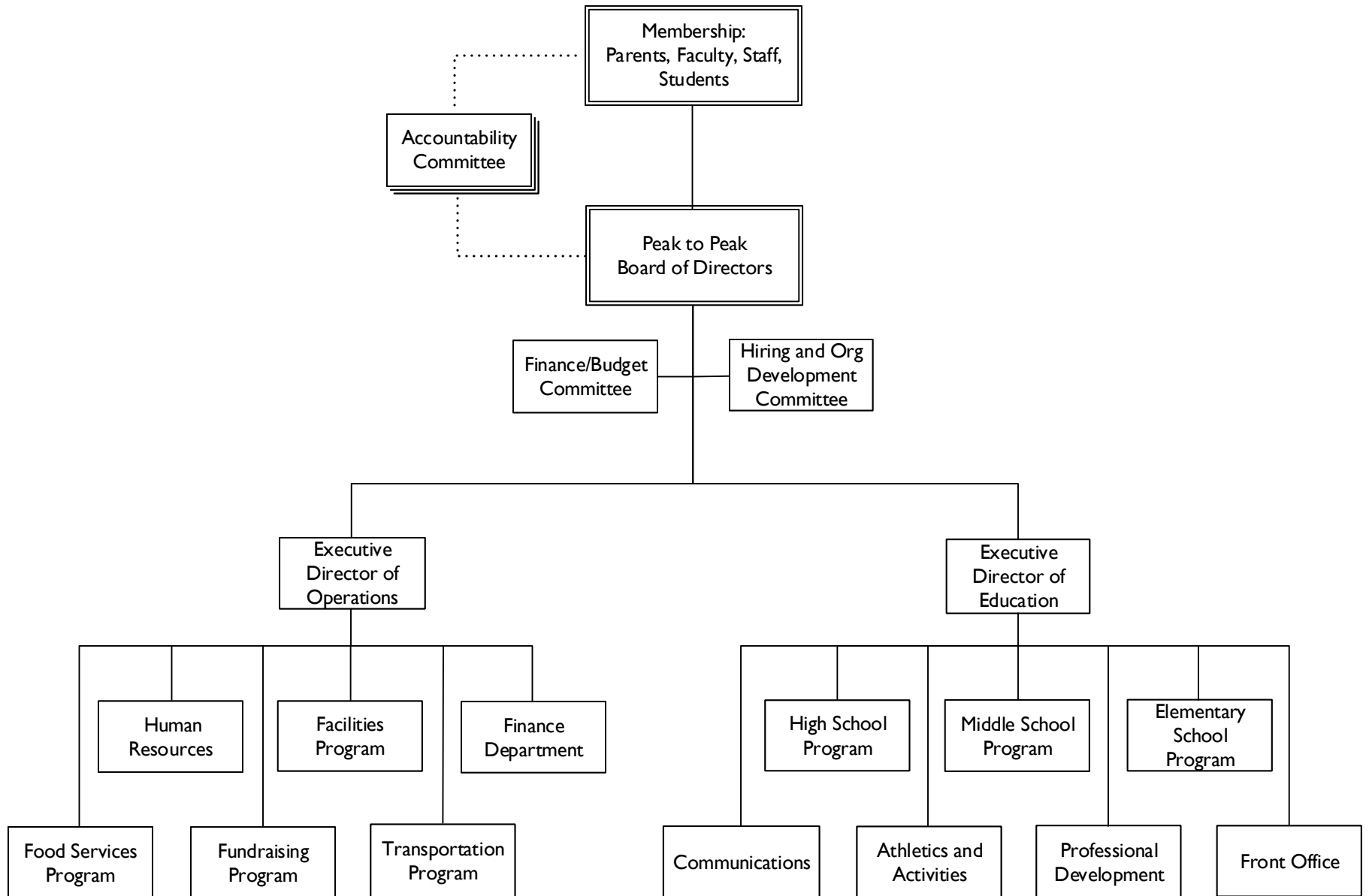
VOTING MEMBERS:

President:	Chirag Shah
Vice President:	Wes Kirk
Treasurer:	Brian Boonstra
Secretary:	Marlene Martin
Member:	Eveline Grady
Member:	Marcus Watkins
Member:	David Woo

NON-VOTING MEMBERS:

Exec Director of Education:	Jennie Klein
Exec Director of Operations:	Sam Todd
High School Principal:	Kyle Mathews
Middle School Principal:	Clara Quinlan
Elementary School Principal:	Melissa Christensen

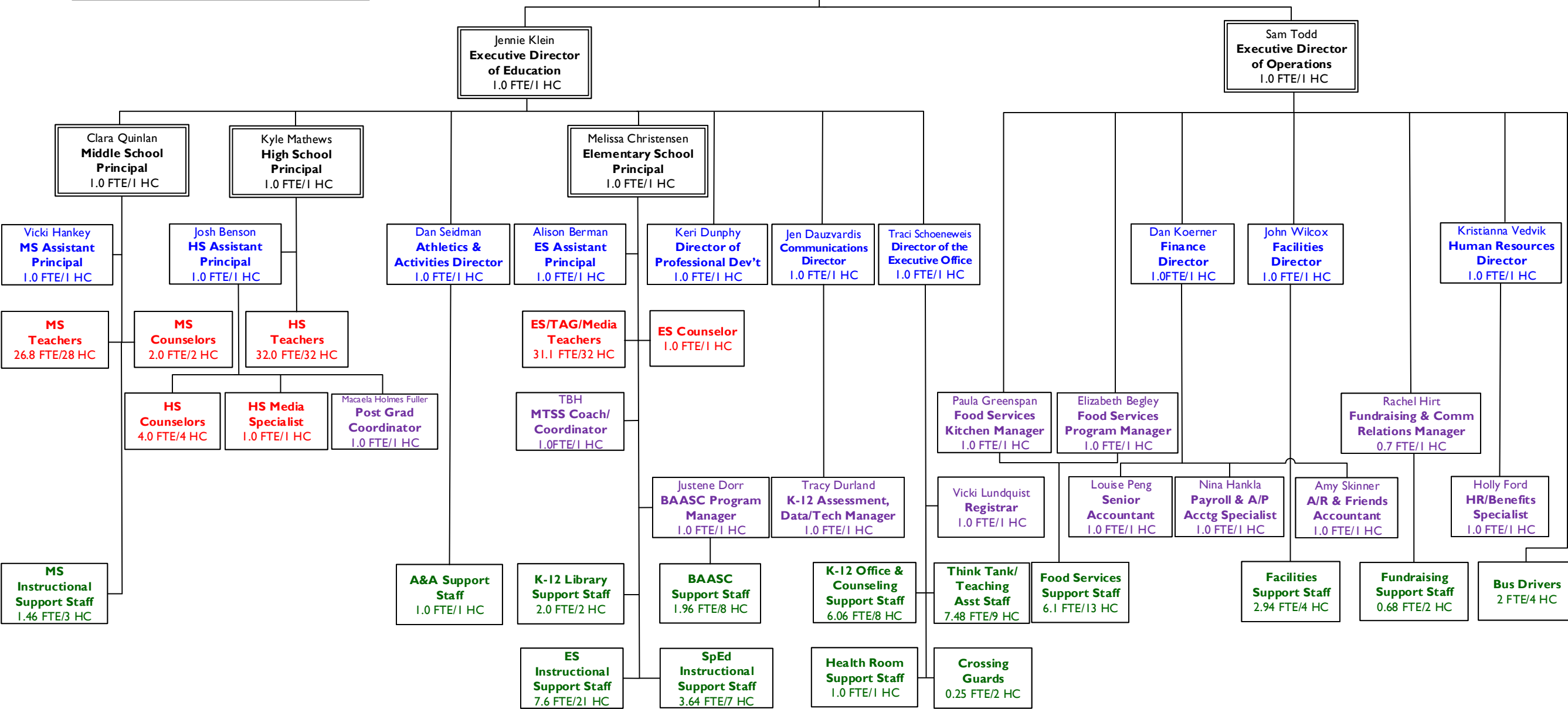
PEAK TO PEAK CHARTER SCHOOL ORGANIZATIONAL STRUCTURE



2022-23 PEAK TO PEAK CHARTER SCHOOL ORGANIZATIONAL CHART

STAFF COUNT		
Executives/Principals	5.0 FTE	5 HC
Directors/Asst Principals	10.0 FTE	10 HC
Teachers and Counselors	97.9 FTE	100 HC
Salaried Support Staff	11.7 FTE	12 HC
Hourly Support Staff	44.2 FTE	85 HC
TOTAL	168.8 FTE	212 HC

BOARD OF DIRECTORS	
Voting Members:	Ex-Officio Members:
Chirag Shah, president	Jennie Klein, exec. director of education
Wes Kirk, vice president	Sam Todd, exec. director of operations
Brian Boonstra, treasurer	Kyle Mathews, high school principal
Marlene Martin, secretary	Clara Quinlan, middle school principal
Eveline Grady, member	Melissa Christensen, elementary principal
Marcus Watkins, member	
David Woo, member	



FRIENDS OF PEAK TO PEAK
SEPARATE 501(C)(3) FROM PEAK TO PEAK

BOARD OF DIRECTORS

**2022-23 FRIENDS OF PEAK TO PEAK
BOARD OF DIRECTORS**

VOTING MEMBERS:

President:	Chirag Shah
Vice President:	Wes Kirk
Treasurer:	Brian Boonstra
Secretary:	Marlene Martin
Member:	Eveline Grady
Member:	Marcus Watkins
Member:	David Woo

NON-VOTING MEMBERS:

Exec Director of Education:	Jennie Klein
Exec Director of Operations:	Sam Todd
High School Principal:	Kyle Mathews
Middle School Principal:	Clara Quinlan
Elementary School Principal:	Melissa Christensen

PRAIRIE VIEW, INC.
(BUILDING CORPORATION SUBSIDIARY OF PEAK TO PEAK)

BOARD OF DIRECTORS

**2022-23 PRAIRIE VIEW, INC.
BOARD OF DIRECTORS**

VOTING MEMBERS:

President:	Chirag Shah
Vice President:	Wes Kirk
Treasurer:	Brian Boonstra
Secretary:	Marlene Martin
Member:	Eveline Grady
Member:	Marcus Watkins
Member:	David Woo

NON-VOTING MEMBERS:

Exec Director of Education:	Jennie Klein
Exec Director of Operations:	Sam Todd
High School Principal:	Kyle Mathews
Middle School Principal:	Clara Quinlan
Elementary School Principal:	Melissa Christensen